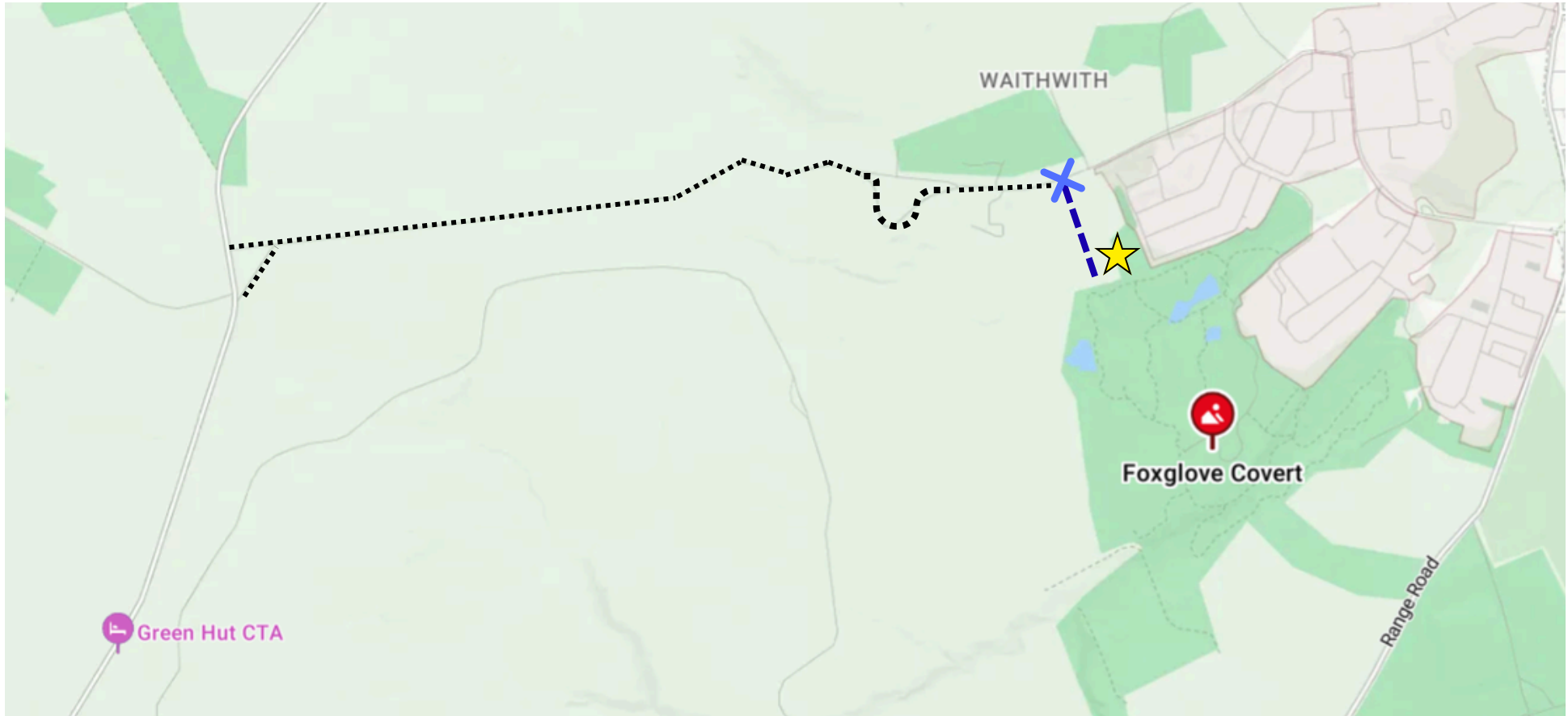


Foxglove Covert entrance



Access to the Foxglove Covert entrance entrance via Waithwith Road



Waithwith Road



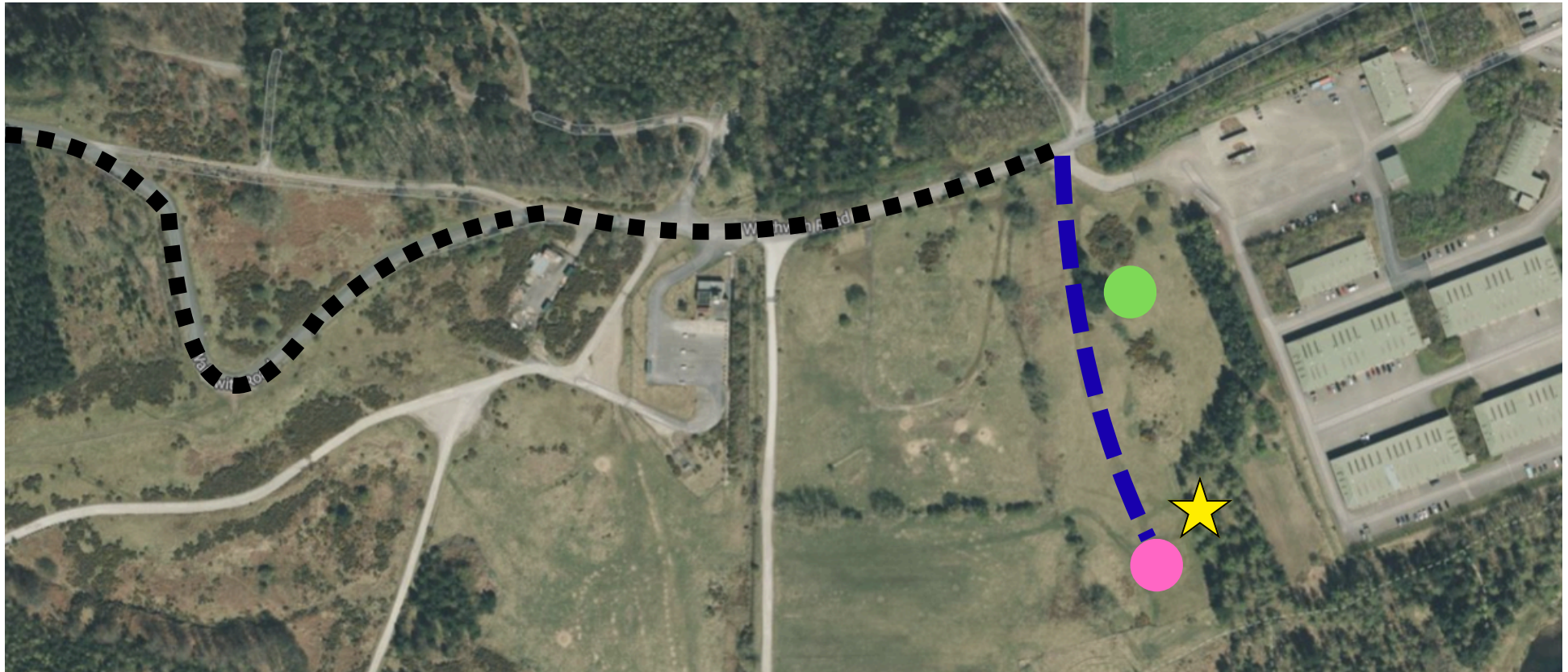
Turn off from Waithwith Road to Foxglove Covert access track (over cattle grid)



Access road to Foxglove Covert parking and entrance



Foxglove Covert entrance



- ■ ■ ■ ■ Waithwith Road
- ■ ■ Access road to Foxglove Covert parking and entrance
- Parking for Foxglove Covert visitors
- Coach parking/overflow parking
- ★ Foxglove Covert entrance; pedestrian access only

**Directions:**

The new entrance to Foxglove Covert LNR is accessible from Waithwith Road.

Waithwith Road can be accessed from the C road C107 (known as the upper tank road to some), which runs between Brokes and the A6108.

Look out for tourist signs for Foxglove Covert which mark the turn offs to Waithwith Road. There are 2 turn offs onto Waithwith Road; either can be used.

**Grid refs for Waithwith Road turn offs:** SE 13757 97454, SE 13778 97350

**What3Words for turn offs:** ///hurtles.still.pave, ///dashes.screening.phones

Follow Waithwith Road. You will pass a group of buildings on the right which is the tank wash. Continue past these buildings until you reach a sign marking the right hand turn on to the Foxglove Covert access track.

**Grid ref for the access track turn off:** SE 15770 97650

**What3Words for the turn off:** ///cure.avoiding.objecting

Drive over the cattle grid onto the Foxglove Covert access track and follow the track past the coach/overflow carpark to the main car park at the end of the track.

**Grid ref for main car park:** SE 15826 97425

**What3Words for main car park:** ///seeing.gazed.regard

It is a very short walk along a path from the main car park to the Foxglove Covert entrance. If you park in the overflow car park, walk along the track to the main car park and then on to the entrance. There is not a separate path from the overflow car park to the entrance. The reserve is pedestrian access only; no bikes or cars may enter the reserve.

**Grid ref for the reserve entrance:** SE 15845 97447

**What3Words for the reserve entrance:** ///shipyards.extent.darling

**Please be aware:**

This route runs alongside the Catterick Training Area; military personnel and vehicles may also be using Waithwith Road. Stay on Waithwith Road and the Foxglove Covert access track and do not take other tracks through the training area.

Sheep are often on the training area; please be mindful of the sheep when driving on the access track. When entering the reserve please ensure you close the gates, so sheep don't get into the reserve.

Most sat navs and map apps will not provide accurate directions. Many provide routes through the training area or barracks which are not accessible to the general public.